



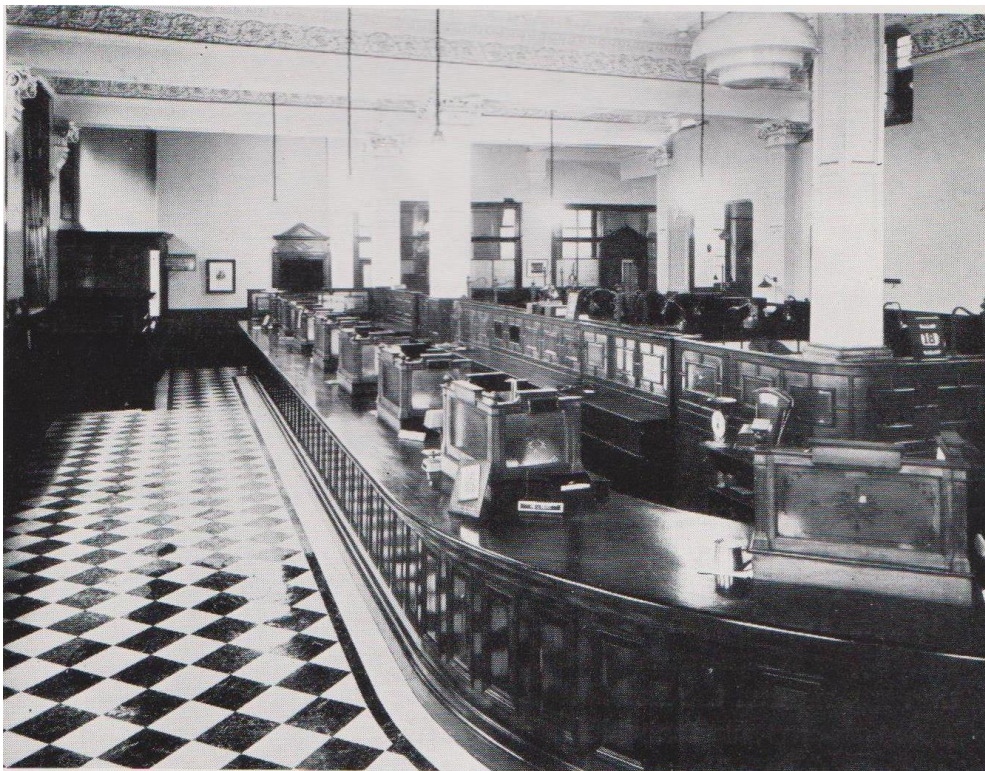
Newsletter

February/ March 2017

FUTURE MEETINGS

Tuesday March 21 st Construction of Ladybower Dam Keith Blood	Tuesday April 18 th Violet Jessop Bob Massey	Tuesday May 16 th British Transport films in Derbyshire Nick Wheat
---	--	--

Please note that the talk by Keith Blood is a follow up to his talk last year about the construction of Howden Dam.



The interior of the Westminster Bank before the alterations in 1958

SUBSCRIPTIONS ARE NOW DUE ANNUAL MEMBERSHIP RATES ARE

INDIVIDUALS – £12 COUPLES – £16

REPORT OF THE AGM HELD 21ST FEBRUARY 2017

Chairwoman's Report – Janet Murphy

Last year at this time some doubt that we would be able to continue. Well we are still here and the bank balance is healthier. We started really well under our new chairman Pete Maycock with a new web site, new ideas and an attractive newsletter. Unfortunately during the summer Pete suffered health problems, which was a setback for him, but also for the Society as he is our IT expert and as a result we have struggled.

During the year we have moved the meetings into the church, which is better as it has enabled us to be more sociable at the end of the meetings.

The Society attended Chesterfield and District Family History Society Fair in August – rather quiet but this year it's at the more accessible Proact Stadium on June 3rd, and History day at Chesterfield Museum. On both occasions we showed the attractive display done by Pete Maycock and Wendy Pockson. Rather more energetic was the walk round Whittington led by Barry Bingham. It was a lovely day but we were rather weary when we got back.

What's in prospect for this year? Already mentioned Family History Fair; we have also been invited to the Spital Cemetery 160th anniversary celebration. A new *Journal* is imminent and hopefully the *Newsletter* will get back on track and there will be the addition of more material on the website.

Treasurer's Report – Janine Le Mire

Expenditure was down principally because there was no *Journal* and the speakers cost less.

Income was higher principally because of a considerable increase in the number of visitors, an increase in the tea donations, and income from talks given by the chairwoman

Committee

The following officers were elected – Chairwoman – Janet Murphy; Vice Chairman – Rodney Ward; Secretary – Chris Thomason; Treasurer – Janine Le Mire.

The following committee members were elected – Brian Dick (Membership Secretary); John Lilley; Pete Maycock; Wendy Pockson; Mick Spracklen.

CAN YOU HELP?

Occasionally we get requests for information. Recently we have been asked information about the layout of **Eckington Secondary School**. Built originally by Derbyshire County Council the school was transferred to Sheffield City Council. It became part of Westfield (Lower) School which was later transferred to the site at Mosborough and the original buildings demolished. No plans have been found so the layout is unknown.

Amanda Johnson is looking for volunteers to help with a project looking at the stories of men from north east Derbyshire who served as stokers during World War I. She may be contacted at **Email:** info@kidologyworkshops.co.uk stokersin NE derbyshire

LADIES FOOTBALL IN 1917

When browsing through a copy of the *Derbyshire Courier* for 22 Dec 1917, I was a bit surprised to come across a report of a football match at Nottingham Forest FC ground between two teams of ladies. Cricket, hockey, tennis, cycling for ladies I was aware of but not football; even today ladies football is hardly high

profile. The match was also notable as the report said that it was probably the first instance on record of a duchess kicking off at a football match, when her Grace the Duchess of Portland set the ball in motion in the encounter between ladies teams representing Chesterfield and the Ministry of Inspections Department, Nottingham played on behalf of the local Sporting Club's effort in aid of the Duchess of Portland's Nottingham Home for Paralysed Soldiers and Sailors. The report continued:-

The Chesterfield ladies came with a big reputation, which they thoroughly justified. They have won many matches and possess a powerful wonderful goal-scoring centre-forward in Miss F Green a big girl exactly built for the position, with a good turn of speed and the gift of marksmanship. The Derbyshire side have been well coached and have by this time acquired quite a useful knowledge of how football should be played both in attack and in defence. Against them the far less experienced Nottingham side had no chance whatsoever. And as the scoresheet shows they were overshadowed and overwhelmed.

Chesterfield soon settled down to press, miskicking by both the Ministry backs allowed Miss Strange to open the scoring for the visitors. Then Miss Hardy missed the ball altogether in attempting to clear and left Miss Charlesworth with an open second goal. Direct from this the Ministry attacked and Miss Crossland put in a shot which Miss Brown allowed to escape her grasp and enter the net. However Miss Watts and Miss Newberry added the third and fourth goals for Chesterfield, who led at the interval by four goals to one. After changing ends, the Nottinghamshire side were never in the hunt and with Misses Newbury, Strange and Green scoring the final result was Chesterfield 7 Nottingham 1.

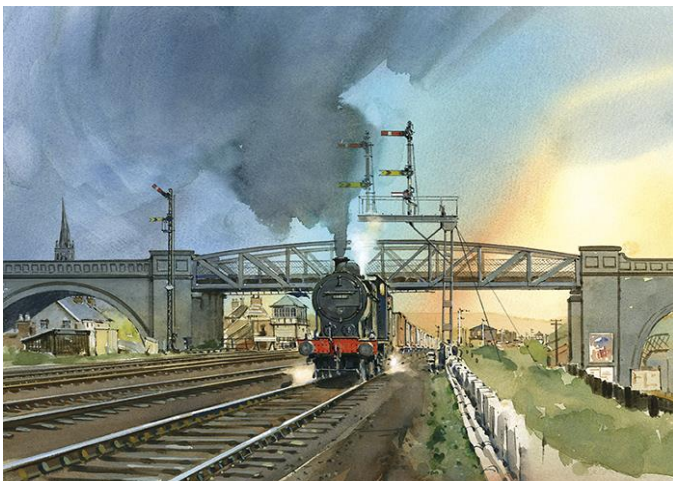
Chesterfield Ladies – Miss Brown, Miss Bradbury, Miss Flanagan, Miss Cartwright, Miss Charlesworth, Miss Coupe, Miss Newbury, Miss Watts, Miss Green (Captain), Miss Strange and Miss Vardy.

It can come as no surprise to learn that Miss Green worked at Robinson's who fielded two teams, Wheatbridge and Holmebrook. I'm not sure that she would have been happy to be described as 'a big girl exactly built for the position' but she was clearly talented as earlier in the year after a match in which Wheatbridge defeated Staveley 8 – 1, she was credited with five goals bringing her total to 25 goals in seven matches!

Clearly during the war there was more opportunity for ladies with organisations such as Barrow Hill and Staveley Loco Depts. fielding teams composed of the ladies who cleaned the engines. A Mr Airey formed a team drawn from Markhams and Bryan Donkins. After the war there were no longer the opportunities and there were fewer matches. During the Second World War Pearson's Pottery had a ladies team.

Janet Murphy

NEW WEB SITE FOR HORNS BRIDGE



The website has been set up by Pete Maycock and Les Elson. It is a comprehensive archive of photographs of Horns Bridge by decades from 1895 until the final demolition in 1985. Work is still in progress on the site.

The painting on the left is by David Charlesworth.

<http://www.hornsbridge.co.uk/>

CHESTERFIELD AT WORK IN 1903

For his annual report of 1903 the Medical Officer of Health extracted from the census returns the following particulars as to the occupations of those inhabitants of the borough who were ten years of age and upwards:-

Males: Total 10577 of whom 1501 were retired or unoccupied and 9076 were engaged in occupations as follows

Commercial or business clerks 207; conveyance of men, goods and messages 907; agriculture on farms, woods and gardens 137; coal and shale miners 1994; engineering and machine making 923; tools, dies, arms and miscellaneous metal trades 97; cycles, coaches and other vehicles 84; buildings and works construction 977; wood, furniture, fittings and decorations 198; brick, cement, pottery and glass 304; papers, prints, books and stationery 131; textile bleaching, printing, dyeing etc 11; dress 327; food, tobacco, drink and lodging 816; all other occupations 1894.

Females: 10257 of whom 7312 were retired or unoccupied and of those occupied 2465 were unmarried and 480 were married or widowed.

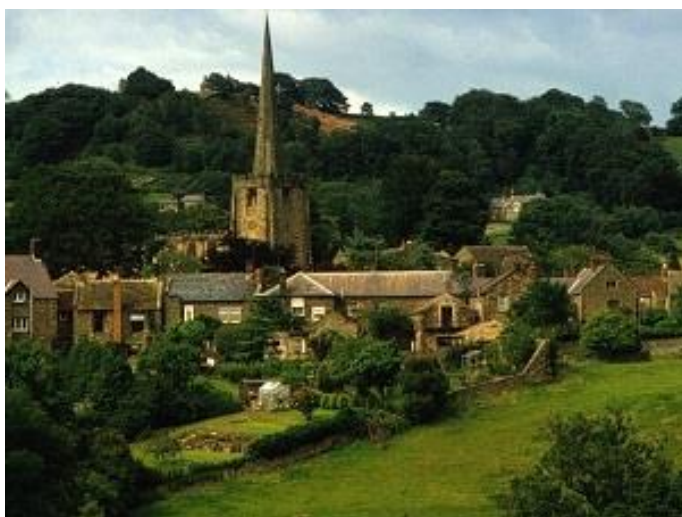
Teaching 164; domestic indoor servants (not in hotels etc.) 859; charwoman 62; laundry and washing services 70; paper, prints, books, stationery 349 (including 327 paper box and bag makers); cotton manufacture 270; hosiery manufacture 16; lace manufacture 34; other textile manufactures 48; tailoresses, milliners, dressmakers, shirtmakers, seamstresses 519; food, tobacco, drink and lodgings 273; all other occupations 491.

VISIT TO CHESTERFIELD MUSEUM

We have decided to attempt to rearrange the visit to Chesterfield Museum and Art Gallery during the day instead of an evening visit. This will be during the break in the lecture programme and not instead of a lecture. This will benefit people who are not keen on going out in the evening and it will not cost CADLHS anything, which an evening visit would. Depending upon the number of people who want to join the visit it may be possible to arrange a couple of dates.

In the meantime why not visit the Museum to see the exhibition on Crime and Punishment.

CHESTERFIELD WALKING FESTIVAL 6th -14th MAY



Walks include Industrial Meanders to the west and to the east of Chesterfield; a George Stephenson walk; historic Dronfield; Ashover and many more besides. Distances range from 1 mile to 34 miles.