



Change of speaker for the September Meeting

The speaker at the September meeting will be David Smith who will be talking about the Crich Mineral Railways. David McPhie will be talking about the sixties music scene in Chesterfield in the sixties next year instead.

There were two mineral railways in Crich. One was the Clay Cross Company's Mineral Railway taking limestone from the quarries to the company's massive kilns at Bullbridge and Ambergate. The other was operated by the Butterley Co from 1793 to 1933. It was originally built as an Outram type plate way but later converted to a railway in 1856/7. Although both lines are closed and most of the tracks lifted a short section of the line remains in use at the Crich Tramway Museum.



Wakebridge Junction. Here the mineral railway originally forked to the right of the new extension to the tramway into Cliff Quarry where it terminated.

CADLHS History Paper 15: The Crich Mineral Line will be on sale at the meeting – price 30p

SPITAL CEMETERY OPEN DAY



19th August 2017 is the 160th anniversary of the consecration of the Anglican burial ground at Spital Cemetery. To mark the anniversary occasion the Friends of Spital Cemetery are holding a Cemetery Open Day with an exhibition at St Leonard's Mission Room, Valley Road. The event will be opened by Toby Perkins at 11am, followed by a performance by the Qdos Community Choir.

There will be stalls advertising the work of local conservation, garden and history groups (including CADLHS). There are also two cemetery walks. Admission free. At 7pm there will be a talk at the Mission Room by Professor Stevens Curl entitled Transformations: Landscape Garden to Garden Cemetery. Admission £10.

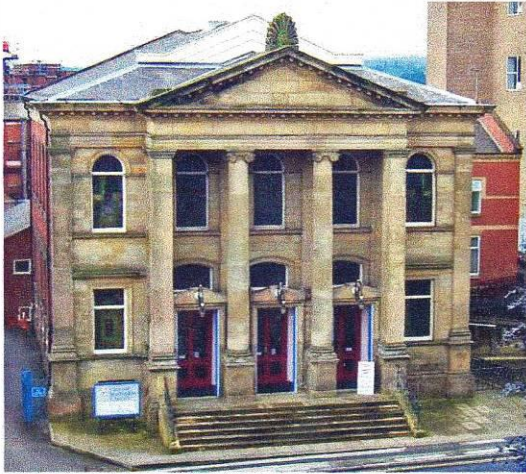
When the Religious Census was carried out in 1851 in Chesterfield more people attended non-conformist places of worship than those of the Established Church. The opening of the cemetery provided a burial ground where nonconformists could be buried according to the rites of their faith and likewise for members of the growing congregation of the newly opened Catholic church.

Many people are buried here who lived through a period of great change in Chesterfield such as the nonconformist families of Eastwood and Robinson and the Anglicans of Swallows and Eyres together with individuals such as James Haslam and William Harvey (founders of the Derbyshire Miners Union. These names are still remembered in the town – others are less well known such as William Wharton, iron founder whose name survives on manhole and drain covers in the town, Samuel Rollinson, architect, and William Oliver, whose Broad Oaks works became the Markham Works.

Many individuals served with distinction on the Borough Council such as T.P.Wood, William Spooner, Wilfred Edmunds and Edwin Swale. The latter had a distinguished military service in WWI and survived to an old age; others who saw service died prematurely as a result of their service and there are headstones marking the graves of war graves of 35 who died as a result of service in WWI and 10 as a result of service in WW2 plus one woman, Veronica Fletcher, a Territorial nurse. There are also graves for men who served in the Peninsular War, the Kaffir War, the Crimean War and the Indian Mutiny the latter including William Coffey VC. There are also memorials to men who died far away including Jem Collis (East Africa) and Owen Francis and Spooner (South Africa) and Joseph Madin (India).

Until recently the graves of the girls who died in the theatre fire in 1910 had no headstones to mark the graves. Many families could not afford headstones.

HERITAGE OPEN WEEKEND – VISIT CHESTERFIELD'S HISTORIC CHURCHES AND CHAPELS



Central Methodist Church

Saltergate

In 1795 a Dissenters Meeting House was registered in Saltergate which refers to the building of the first Wesleyan Chapel on this site.

This was replaced by a new chapel in 1870. There was a major reconstruction of the church commencing in 1984.

Open September 9th 10am – 4pm



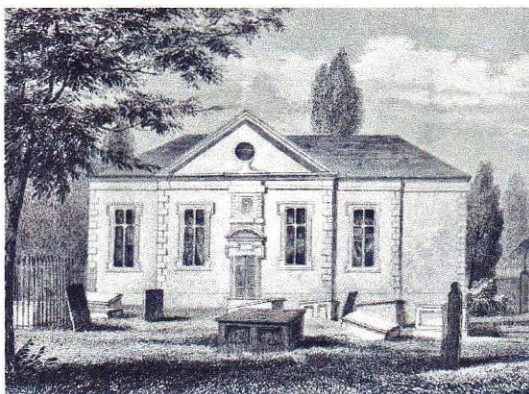
Holy Trinity Church

Newbold Road

In 1837 the new parish of Holy Trinity was formed comprising parts of Chesterfield, Tapton and Newbold. The church 1838 was erected at a cost of £3700 on land given by the Duke of Devonshire.

Best known as the burial place of George Stephenson, it is also notable for the memorial to William Poole, killed during the Indian Mutiny, and the stained glass window in memory of George Albert Eastwood.

Open September 9th 10am -3pm



Elder Yard Unitarian Chapel from the south 1839

Elder Yard Unitarian Chapel

This was the first dissenting place of worship to be built in the town. It was completed in 1694. Initially the Independents and the Presbyterians shared the building until 1773 when the Independents withdrew and the Presbyterians became the Unitarians.

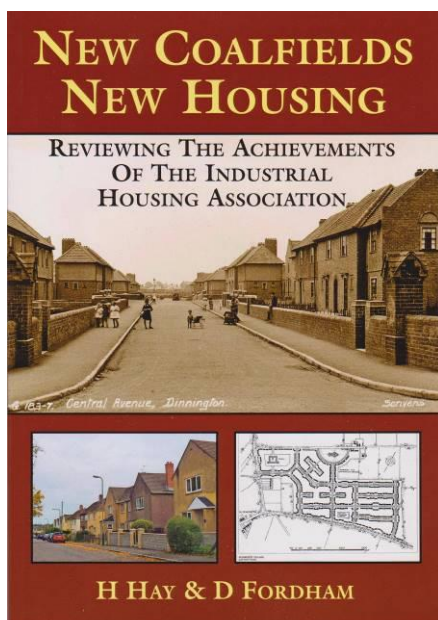
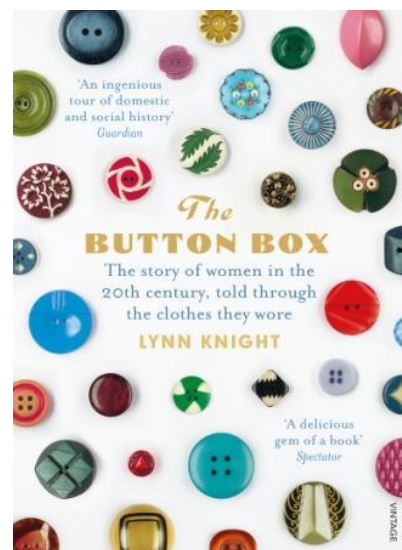
**Open September 7th - 9th 10:00-16:00
September 10th 10:00-15:00**

Local History Day at Chesterfield Museum September 23rd. See you there.

New books

From Lynn Knight – author of *Lemon Sherbet* and *Dolly Blue* comes *The Button Box – the story of women in the 20th century, told through the clothes they wore*. ISBN: 9780099593096

An inlaid wooden box holds the buttons of three generations of Lynn Knight's family. Every button tells a story from a scarlet ladybird from her own childhood, chunky turquoise buttons from her mother's 60s-era suit and sky-blue buckles from a dress her grandmother wore. From the jet buttons of Victorian mourning to the short skirts of the 1960s, buttons worn by suffragettes to bachelor girls and came from little dressmakers to Biba and 'Madam' shops. Although there not a lot about Chesterfield in the book there are mentions of shops like Swallow's and Bailey's and some of us will have fond memories of the days of the mini-skirts!



Housing on the early coalfields tended to be built as cheaply as possible although there were exceptions most notably at Bolsover and Cresswell. The Industrial Housing Association Reviews was formed to provide housing of a better standard. Charles Paxton Markham was one of the directors. The book is fully illustrated with maps and photographs of sites ranging from Piccadilly Road, Chesterfield (16 houses) to Duckmanton (712).

It may be difficult to purchase a copy of the book but it is available through the County Library Service. ISBN: 9780956286475 Fedj El Adoum Publishing.

October 17 th Reconstructing medieval Chesterfield, house by house Philip Riden	November 21 st Edward Carpenter Suzanne Bingham	December 12 th (2 nd Tuesday) Short items by members Followed by mince pies
---	--	--